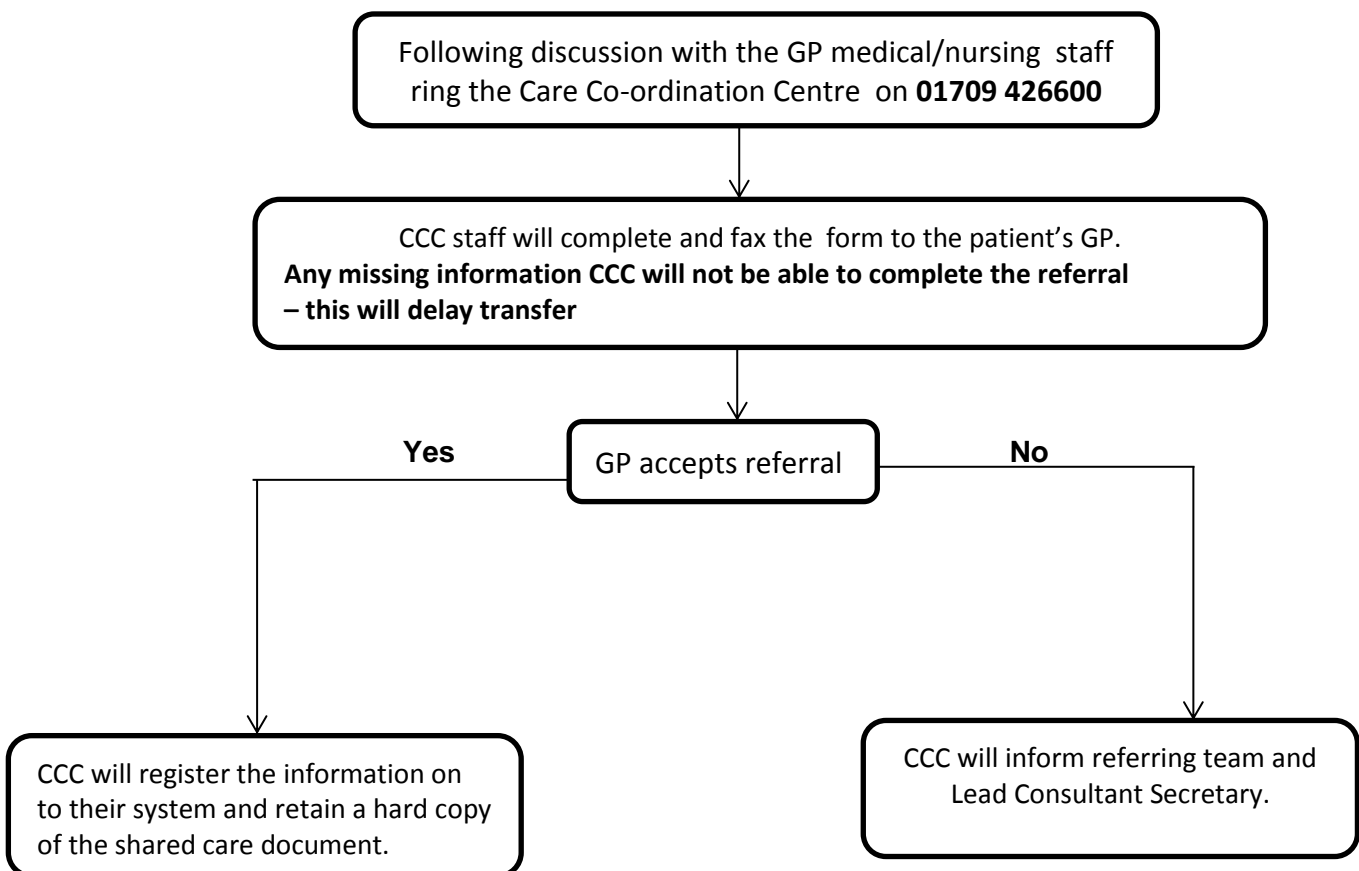


Guidance document.

Tinzaparin: Transfer of prescribing and monitoring from hospital to primary care shared care document

This guidance should be used when implementing the above shared care protocol.

Note: It is the responsibility of the referring clinical team to discuss details of the intended patient transfer with the GP before contacting the Care Co-ordination Centre (CCC). CCC will complete the Shared Care Document however, copies are available on InSite on the Anticoagulation Page or the Pharmacy Formulary shared drive for staff to view to ensure that they are familiar with the information that CCC require. **Any missing information will delay the referral.**



Please note: In the unlikely event that the Hospital Based Anticoagulation Service are required to perform the 12 -14 day HIT* monitoring a referral must be made to that service using usual processes

*Heparin Induced Thrombocytopenia