

# NHS Rotherham Clinical Commissioning Governing Body

Operational Executive – 19 January 2015

Strategic Clinical Executive – Date

GP Members Committee (GPMC) – Date

**Clinical Commissioning Group Governing Body - 4 February 2015**

## ROTHERHAM PUBLIC HEALTH OUTCOMES

Lead Executive:	<b>Robin Carlisle</b>
Lead Officer:	
Lead GP:	Julie Kitlowski

### **Purpose:**

To inform Governing Body of public health outcomes in 2013

### **Background:**

The attached paper has been produced by RMBC public health colleagues.

It contains trend data for Rotherham and comparators. Public health comparator data has to be analysed and released via the Office of national statistics and so typically data become available in October or November the year after the event.

Mortality data fluctuate year on year so it is better to look at trend data as presented in these charts rather than one year changes that can be misleading.

The CCG will refresh its 15/16 ambition for Potential Years of Life Lost as part of the 15/16 planning process.

The CCG and Health and Well Being Board are required to produce quantifiable trajectories for smoking, alcohol and obesity.

### **Analysis of key issues and of risks**

Members should not lose sight of the fact that nationally we are living through a period of sustained year on year improvements in mortality data.

However there are still marked inequalities within Rotherham and the data presented show that for some measures Rotherham's comparative position against the national trend was not favourable in 2013.

Three points are of note:

- Potential Years of life lost – although the long term trend is down Rotherham is not closing the gap on England and Wales. The CCG refreshed its contribution to the Rotherham Potential Life Years Lost plan in July 2015
- Cardiovascular under 75 mortality. The long term absolute reductions are remarkable. The extremely positive position where Rotherham appeared to be close to closing the gap with the national average in 2004-6, seems to be less positive now. However it is still the case that there continue to be substantial year on year improvements in cardiovascular mortality in Rotherham.
- Respiratory mortality under 75 - the data are concerning as they show an absolute



increase in mortality rates. This is a key part of the Potential Years Life Lost Plan. It is believed that part of the answer is changes in coding so that local clinicians are increasing using respiratory codes when cause of death is uncertain but there are also important actions in the Potential Years of Life Lost Plan such as flu vaccination and use of care bundles for community acquired pneumonia.

**Patient, Public and Stakeholder Involvement:**

The CCG has recommended the data are discussed at the HWBB.

**Equality Impact:**

Separate data show that there are marked differences in mortality data between different electoral wards in Rotherham.

**Financial Implications:**

The CCG has a quality premium based on Potential years of life lost. This was not achieved in 2013. 2014 data will be available in October/November 2015.

**Approval history:**

OE 19/01/15

**Recommendations:**

Governing Body to note the data on public health outcomes.

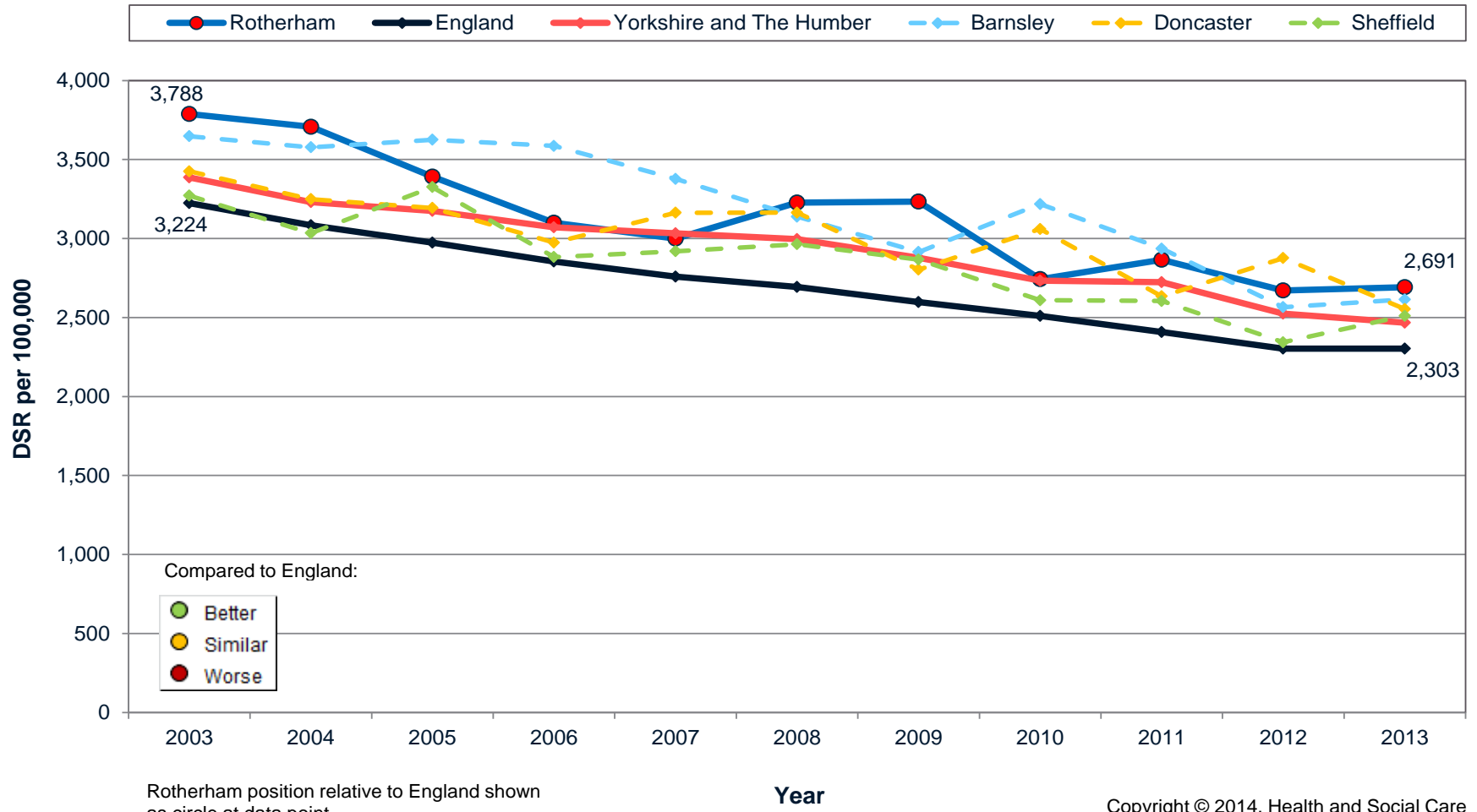
Summary information based on the extract from the CCG Delivery Dashboard below:

### Rotherham Health Outcomes 2014/15

Preventing people from dying prematurely							
Indicator	Target	Actual YTD	RAG YTD	Actual Period	RAG Period	Period Date	Further Information
Potential Years of Life Lost (PYLL) from causes considered amendable to healthcare, per 100,000	2,474.00	2,490.20	●	2,490.20	●	2013	Target based on 2014/15 planned trajectory
Potential Years of Life Lost (PYLL) Age 20+ - FEMALES (CCG)	-3.20	-3.61	★	-3.61	★	2012	Target based on England average
Potential Years of Life Lost (PYLL) Age 20+ - MALE (CCG)	-3.20	-7.30	★	-7.30	★	2012	Target based on England average
Under 75 mortality rate from cardiovascular disease (CCG)	64.90	70.80	▲	70.80	▲	2012	Target based on England average
Under 75 mortality rate from respiratory disease (CCG)	28.10	39.10	▲	39.10	▲	2012	Target based on England average
Under 75 mortality rate from liver disease (CCG)	15.50	14.90	★	14.90	★	2012	Target based on England average
Under 75 mortality rate from cancer (CCG)	122.10	141.60	▲	141.60	▲	2012	Target based on England average

Looking at data from the Health and Social Care Information Centre, [in terms of Rotherham local authority residents](#), although fluctuating over time, directly standardised rates (DSR) of PYLL have decreased overall from 3,788 to 2,691 (29% decrease) in the period 2003 to 2013 (see chart below). The gap between Rotherham and England again fluctuates but has decreased looking at 2013 compared to 2003. However, Rotherham rates remain significantly worse than England. Although Rotherham rates have generally been significantly worse than the Yorkshire and the Humber (Y&H) average, for 3 of the 11 years rates have been similar. Again the gap has decreased between Rotherham and Y&H. Currently (2013) Rotherham has the worst rates of PYLL of the 4 South Yorkshire districts.

**Potential years of life lost (PYLL) from causes considered amenable to healthcare  
Directly standardised PYLL rate (DSR) per 100,000 population 2003-2013  
Rotherham LA compared to England, Yorkshire and the Humber, and South Yorkshire LAs**



Rotherham position relative to England shown as circle at data point.

Causes considered amenable to health care are broken down into 13 groups. Of these, only 4 groups are considered large enough to provide data at CCG level: cerebrovascular diseases, ischaemic heart diseases, neoplasms and respiratory diseases. However, data is only available for three 3-year aggregate periods (2009-11, 2010-12 and 2011-13) Following the CCG format (see table above) of monitoring premature mortality for cardiovascular disease, cancer, liver disease and respiratory disease, data is available from the PHOF for Rotherham LA as three year aggregates from 2001-03 to 2011-13. Screen prints of charts/tables are shown below (Source: Public Health England)

#### Cardiovascular Disease (Under 75 mortality from all cardiovascular diseases)

Rotherham's rate has decreased by 48% between 2001-03 and 2011-13 (England decreased by 44%). Rotherham's rate for 2011-13 is worse than England but similar to the Yorkshire and the Humber average. Rotherham ranks 7<sup>th</sup> of 15 in Y&H (1<sup>st</sup> = best)

#### Cancer

Rotherham's rate has decreased by 16% between 2001-03 and 2011-13 (England decreased by 15%). Rotherham's rate for 2011-13 is worse than England but similar to the Yorkshire and the Humber average. Rotherham ranks 10<sup>th</sup> of 15 in Y&H (1<sup>st</sup> = best)

#### Liver disease

Rotherham's rate has increased by 41% between 2001-03 and 2011-13 (England increased by 13%). Rotherham's rate was below England average in 2001-03 but increased until 2005-07 since when it has generally levelled out. Rotherham's rate for 2011-13 is similar to both England and the Yorkshire and the Humber average. Rotherham ranks 4<sup>th</sup> of 15 in Y&H (1<sup>st</sup> = best)

#### Respiratory disease

Rotherham's rate has increased overall by 2% between 2001-03 and 2011-13 (England decreased by 18%). The downward trend between 2003-05 and 2006-08 has been followed by an increasing trend since then with the gap with England increasingly widening. Rotherham's rate for 2011-13 is worse than England and the Yorkshire and the Humber average. Rotherham ranks 11<sup>th</sup> of 15 in Y&H (1<sup>st</sup> = best)

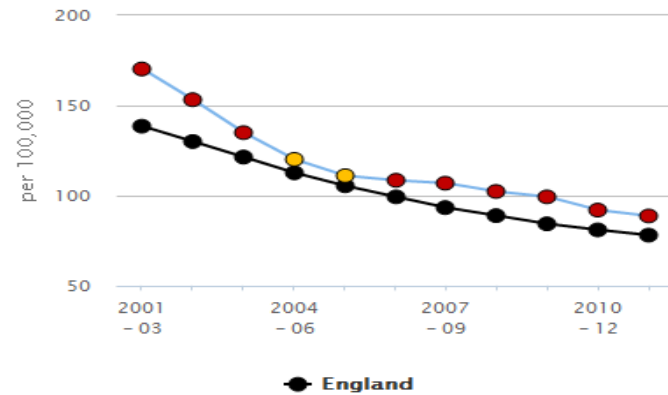
Compared with benchmark: ● Better ● Similar ● Worse ● Lower ● Similar ● Higher   
○ Not compared

Trends for: **Rotherham**  
 All in Yorkshire and the Humber

#### 4.04i - Under 75 mortality rate from all cardiovascular diseases (Persons)

Rotherham

Directly standardised rate - per 100,000



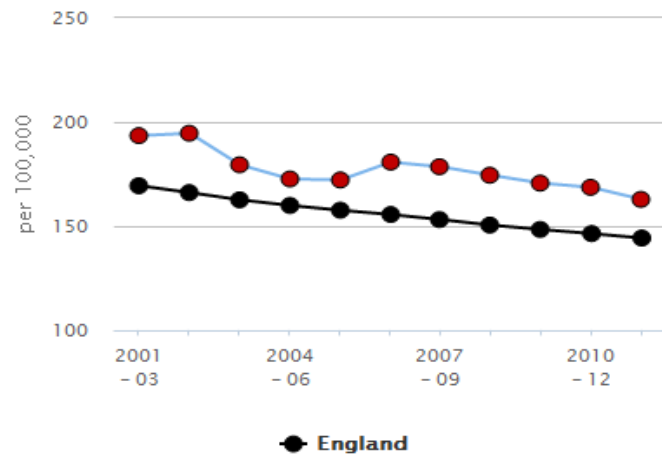
Period	Sig	Count	Value	Lower CI	Upper CI	Yorkshire and the Humber	England
2001 - 03	●	991	170.4	159.9	181.4	148.4	138.7
2002 - 04	●	904	153.3	143.5	163.7	136.9	130.2
2003 - 05	●	812	135.1	125.9	144.8	128.3	121.5
2004 - 06	●	734	120.2	111.6	129.3	121.0	112.8
2005 - 07	●	688	111.2	103.0	119.8	114.5	105.6
2006 - 08	●	681	108.7	100.6	117.2	109.9	99.5
2007 - 09	●	681	107.0	99.1	115.4	103.5	93.5
2008 - 10	●	664	102.4	94.7	110.5	99.8	89.0
2009 - 11	●	652	99.5	92.0	107.4	94.8	84.4
2010 - 12	●	616	92.1	85.0	99.7	91.4	81.1
2011 - 13	●	603	88.8	81.9	96.2	87.3	78.2

Source: Public Health England (based on ONS source data)

#### 4.05i - Under 75 mortality rate from cancer (Persons)

Rotherham

Directly standardised rate - per 100,000



Period	Sig	Count	Value	Lower CI	Upper CI	Yorkshire and the Humber	England
2001 - 03	●	1,149	193.6	182.5	205.1	178.7	169.4
2002 - 04	●	1,172	194.7	183.7	206.2	176.3	166.2
2003 - 05	●	1,102	179.6	169.1	190.6	170.6	162.7
2004 - 06	●	1,070	172.7	162.5	183.5	167.0	160.0
2005 - 07	●	1,081	172.3	162.1	182.9	165.2	157.8
2006 - 08	●	1,142	180.8	170.5	191.7	164.2	155.7
2007 - 09	●	1,143	178.6	168.4	189.3	161.6	153.2
2008 - 10	●	1,135	174.5	164.5	185.0	159.1	150.6
2009 - 11	●	1,132	170.7	160.9	181.0	158.3	148.5
2010 - 12	●	1,140	168.7	159.0	178.8	157.4	146.5
2011 - 13	●	1,116	162.9	153.5	172.8	155.0	144.4

Source: Public Health England (based on ONS source data)

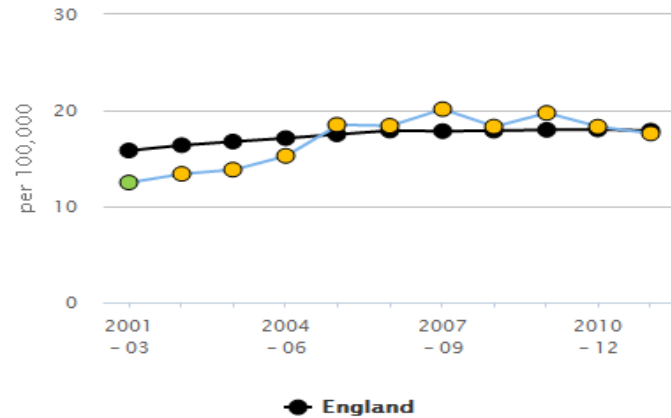
Compared with benchmark: ● Better ● Similar ● Worse ● Lower ● Similar ● Higher ○ Not compared

Trends for: **Rotherham**  
All in Yorkshire and the Humber

#### 4.06i - Under 75 mortality rate from liver disease (Persons)

Rotherham

Directly standardised rate - per 100,000



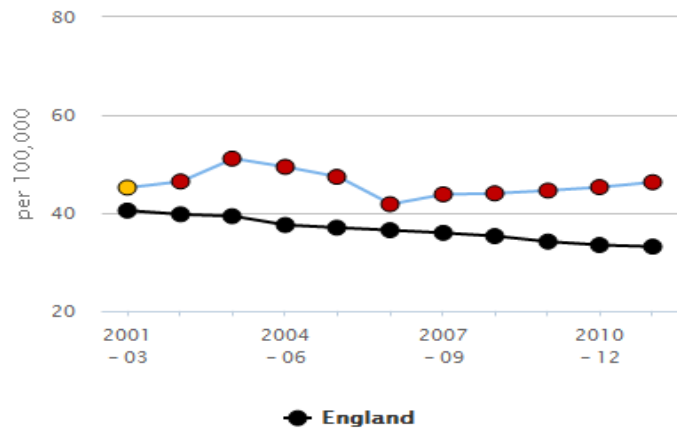
Period	Sig	Count	Value	Lower CI	Upper CI	Yorkshire and the Humber	England
2001 - 03	●	80	12.5	9.9	15.6	14.5	15.8
2002 - 04	●	86	13.4	10.7	16.6	15.6	16.4
2003 - 05	●	90	13.8	11.1	17.0	16.6	16.8
2004 - 06	●	99	15.3	12.4	18.6	17.5	17.1
2005 - 07	●	121	18.5	15.4	22.2	17.7	17.5
2006 - 08	●	121	18.4	15.3	22.0	17.6	17.9
2007 - 09	●	133	20.2	16.9	23.9	17.6	17.9
2008 - 10	●	123	18.3	15.2	21.9	17.6	17.9
2009 - 11	●	134	19.8	16.5	23.4	18.8	18.0
2010 - 12	●	127	18.3	15.3	21.8	18.9	18.0
2011 - 13	●	124	17.6	14.7	21.0	18.8	17.9

Source: Public Health England (based on ONS source data)

#### 4.07i - Under 75 mortality rate from respiratory disease (Persons)

Rotherham

Directly standardised rate - per 100,000



Period	Sig	Count	Value	Lower CI	Upper CI	Yorkshire and the Humber	England
2001 - 03	●	259	45.3	39.9	51.1	45.6	40.5
2002 - 04	●	270	46.5	41.1	52.4	45.2	39.8
2003 - 05	●	300	51.2	45.5	57.3	44.5	39.4
2004 - 06	●	294	49.5	43.9	55.5	42.2	37.6
2005 - 07	●	287	47.4	42.1	53.3	42.1	37.1
2006 - 08	●	260	41.9	36.9	47.3	41.8	36.5
2007 - 09	●	276	43.8	38.8	49.3	42.6	36.0
2008 - 10	●	282	44.0	39.0	49.5	41.8	35.3
2009 - 11	●	291	44.6	39.6	50.1	40.8	34.2
2010 - 12	●	301	45.3	40.3	50.8	39.4	33.5
2011 - 13	●	313	46.3	41.3	51.8	39.3	33.2

Source: Public Health England (based on ONS source data)