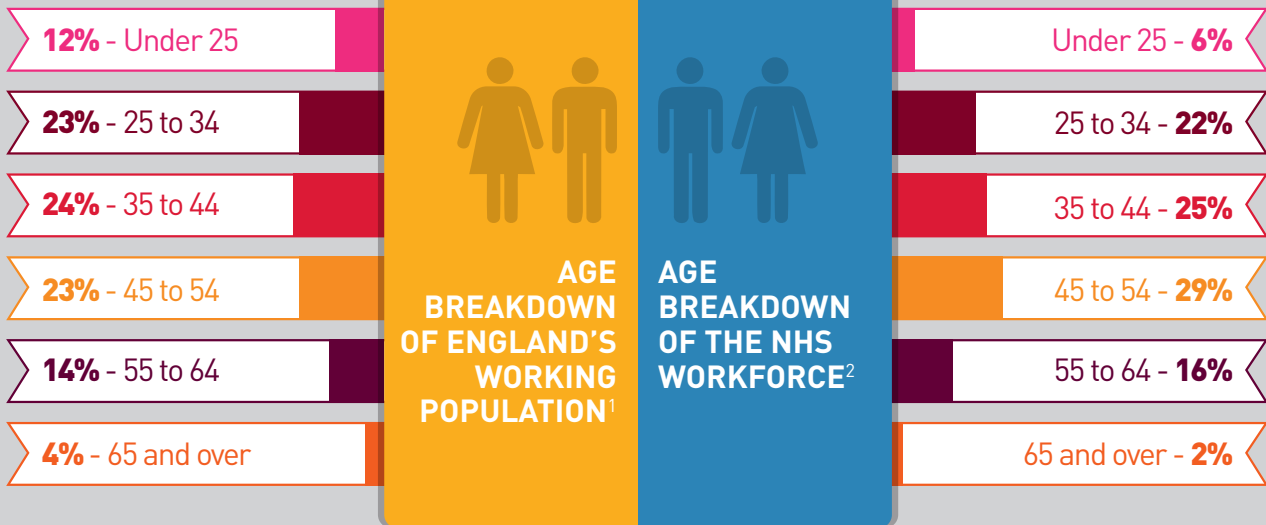


# Age in the NHS



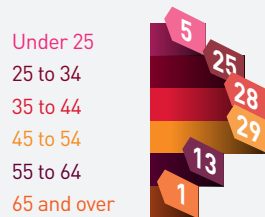
**42** is the average age of women working in the NHS, the same as that for men<sup>3</sup>

## Age breakdown of Agenda for Change staff<sup>2</sup>

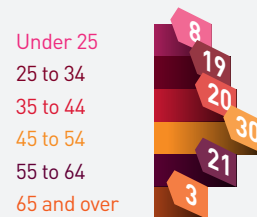
### Bands 8a-9



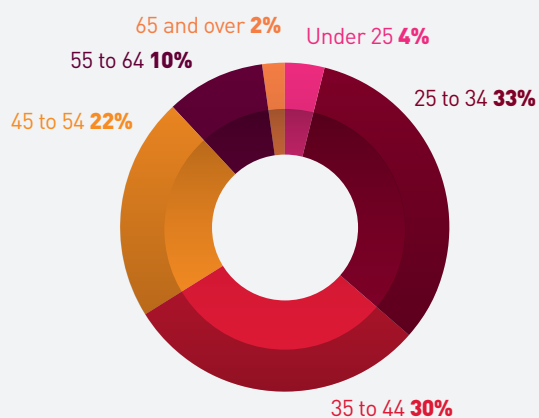
### Bands 5-7



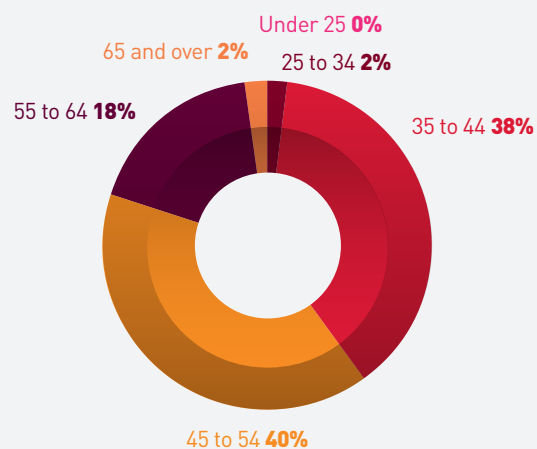
### Bands 1-4



## Medical & Dental staff



## Consultants (including director of public health)



#### Source:

1. England population aged 16-64 in England, Office for National Statistics - Annual Population Survey, 12 months to September 2015; 2011 UK Census. These figures have been adjusted to use the same categories as the NHS workforce data to aid comparison.
2. Health and Social Care Information Centre (HSCIC), Hospital and Community Health Services (HCHS) workforce statistics: Age band of staff in NHS trusts and CCGs in England by staff group and grade, September 2015. Excludes general practitioners.
3. HCHS staff, NHS Employers estimates, September 2015.



[www.nhsemployers.org](http://www.nhsemployers.org)

[enquiries@nhsemployers.org](mailto:enquiries@nhsemployers.org)

[@nhsemployers](https://twitter.com/nhsemployers)

